



ZW63701 EVAPORATOR & HEATER CORE CLEANER JOB AID

Technical Support: 800-255-8138

Safety Recommendations:

- Use extreme safety measures when working around a running engine.
- Always block the vehicles drive wheels.
- Ventilate the vehicles exhaust.
- Always wear safety glasses.
- Wear gloves.



Preparing the Vehicle:

- Raise the vehicle on the lift.
- Secure the vehicle using the lift's lock mechanism.
- Locate the AC drain tube (under the passenger side by the fire wall).
- Place waste container under the AC drain hose.

NOTE: To locate the tube run the engine with the A/C on for a few minutes, look for dripping water under the vehicle.

If drain is blocked, clean blockage before applying product.



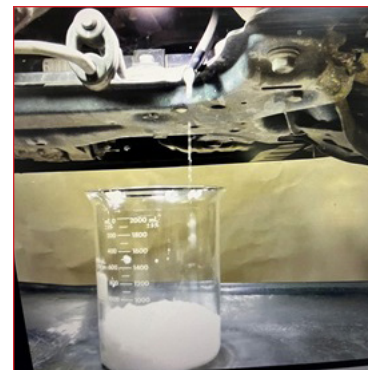
Introducing the Cleaner into the A/C System:

- Attach the long cleaner hose to the can (the hose comes with the product)
- Insert the hose with the tip into the drain tube as far as possible.



Introducing the Cleaner into the A/C System (continued):

- Shake the can well, press the can's trigger make sure the can is completely emptied into the drain tube.
The foam will expand inside the system then collapse.
- Once collapsed, it will become liquid and drain out of the A/C tube.





ZW63701 EVAPORATOR & HEATER CORE CLEANER JOB AID

Technical Support: 800-255-8138

Introducing the Cleaner into the A/C System (continued):

- Once the liquid is completely drained bring the vehicle down.
- Attach an exhaust hose to the car
- Run the engine
- Turn the A/C fan on for 3 minutes

